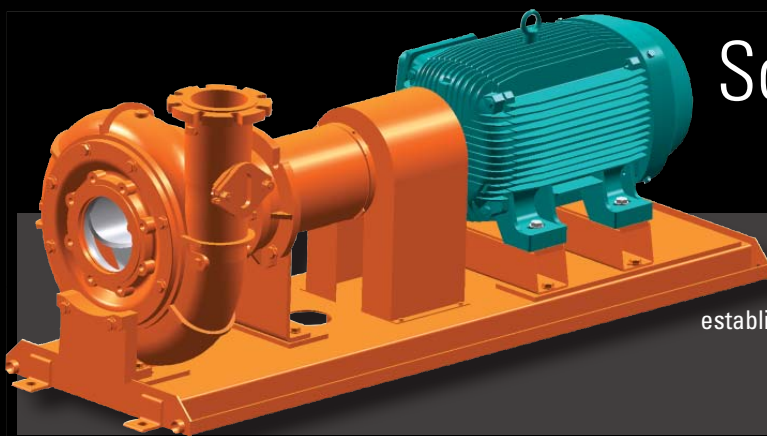


# Dry Pit Solids Handling Pumps



## A Time-Tested Leader

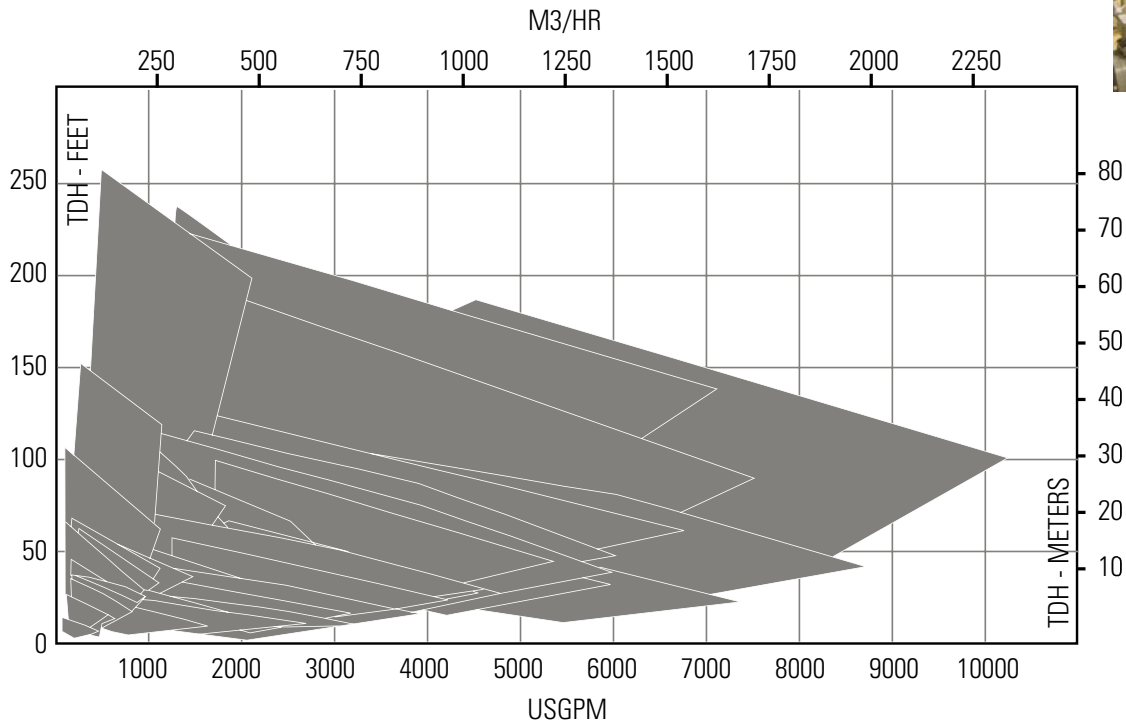
Chicago Pump Dry Pit Solids Handling Pumps have an established reputation of efficiency, long life and reliable operation

First in: Quality  Reliability  Innovation

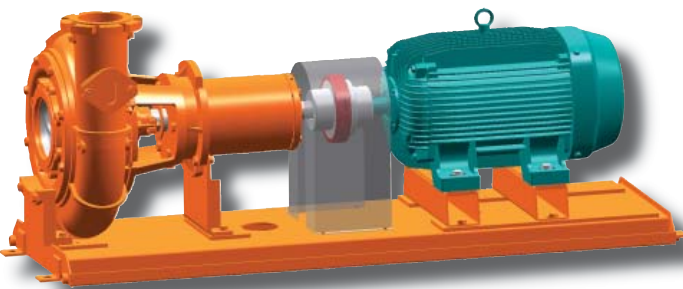


# Series 2111

## Dry Pit Solids-Handling Pumps



- Capacities to 10,000 GPM (2,271 m<sup>3</sup>/h)
- Heads to 240 ft. (73m)
- Temperatures to 150° F (66° C)
- Pressures to 150 PSI (1,034 kPa)
- Discharge sizes from 4" (102mm) to 12" (305mm)
- Solids (sphere size) from 3" (64mm) to 5" (127mm)



**HBB**  
Horizontal Base Mounted



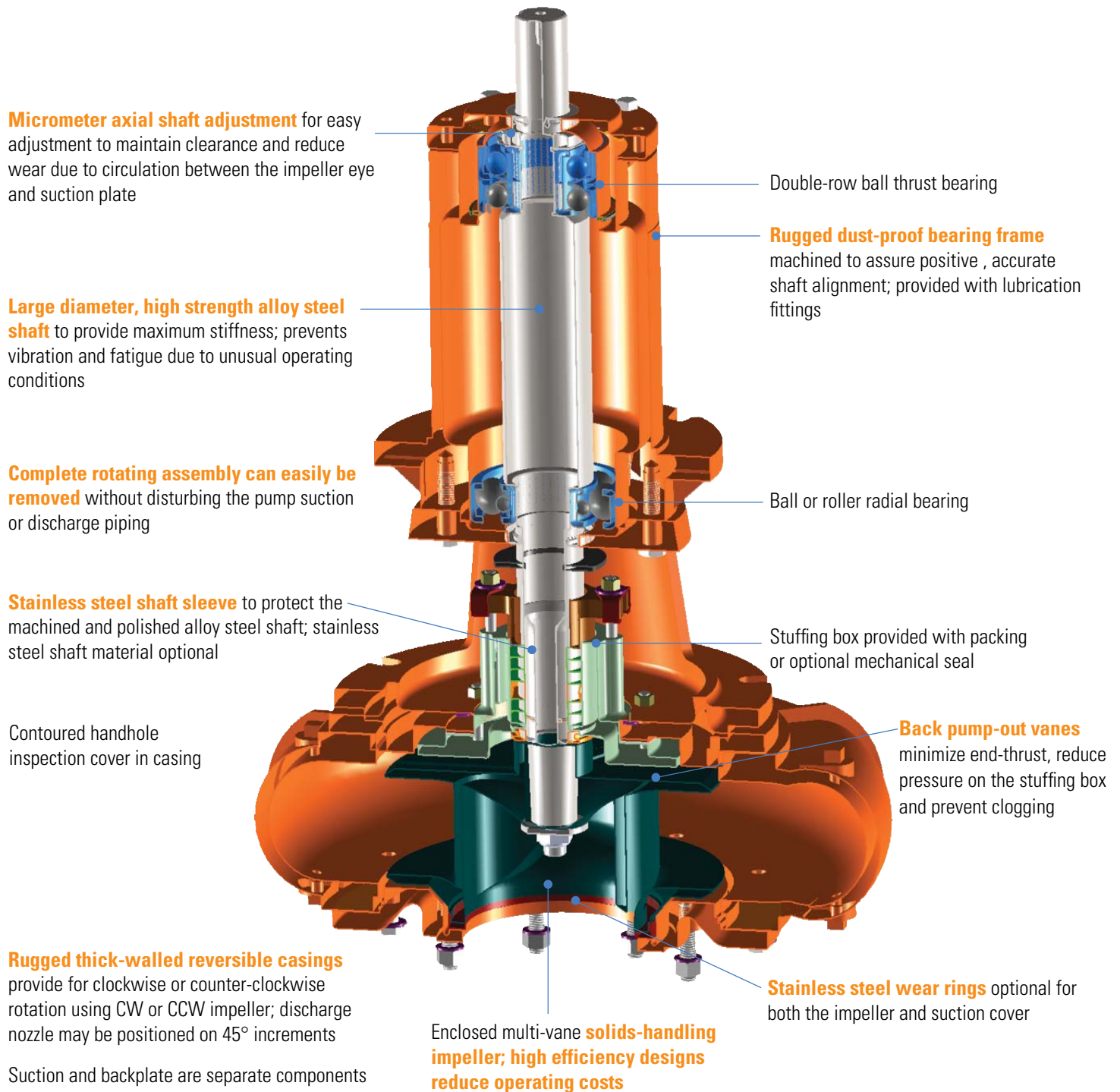
**VPM**  
Vertical Pedestal Mounted



**VOS**  
Vertical Open Shaft

# Standard Features

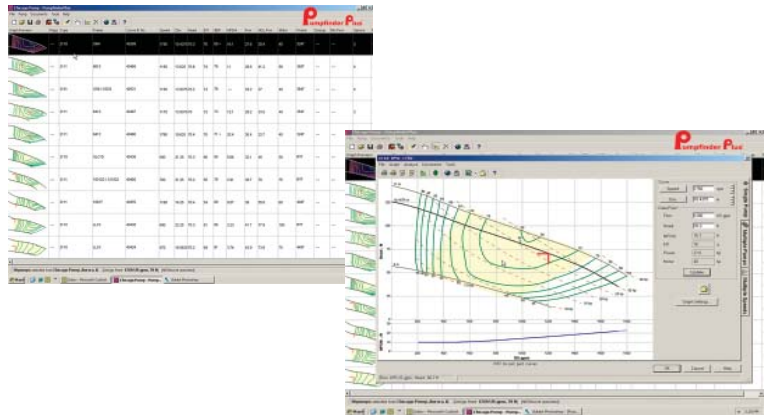
Engineered for long service life and low maintenance



Features may vary depending upon series, model and bearing frame



Chicago Pump provides the latest in free, user-friendly pump selection and sizing software for all of our pump types and configurations; with easy online web access and supporting documents, including specifications, installation drawings, product information and sales brochures. The program facilitates easy submission of quotation and engineering support requests to our staff of experienced application engineers.



Chicago Pump  
3905 Enterprise Court  
Aurora, IL 60504  
630-236-5700  
www.chicagopump.com



ISO 9001:2000 Quality System

Bulletin CP 2111-04-09



# Submersible Solids Handling Pumps

## **A Time-Tested Leader**

Chicago Pump Submersible Solids Handling Pumps have an established reputation of efficiency, long life and reliable operation

**First in: Quality** ✓ **Reliability** ✓ **Innovation** ✓

# Designed to Last

Since 1909, Chicago Pump® has been manufacturing quality wastewater pumping equipment. From our ISO9001:2000 certified facilities in Aurora, Illinois, we serve a worldwide customer base of discerning pump system designers and end users.

Chicago Pump Submersible Solids Handling Pumps have an established reputation of efficiency, long life and reliable operation. The basic design features of each CHICAGO PUMP include:

- Utilizes both elastomeric grommets and epoxy potting for a fully protected non-wicking cable entry system
- The motor is an air-filled self-cooled type with a non-hygroscopic Class H insulation system rated for continuous duty in 40° C ambient liquid with a 1.15 S.F.
- The wound stator core is press-fit for positive alignment and efficient heat transfer
- Permanently lubricated bearings
- One-piece solid stainless steel shaft
- Dynamically balanced shaft and rotor assembly
- Rugged & robust mechanical seals designed for harsh applications
- Standard high reliability moisture detection system
- Stator thermal protection safeguards the motor
- Optional VFD duty motors built in accordance with NEMA Part 31



## INSTALLATIONS

Collection Systems	Sewage Lift Stations
Industrial Wastewater	Treatment Plants
Power Plants	Commercial Buildings
Dewatering	Recreational Facilities
Manure, Farm Waste	

## APPLICATIONS

Raw Water	Wastewater
Light Slurries, Sludge	Raw Sewage
Storm Water	Oily Water
Drainage, Leachate	Process Waste
Waste Transfer & Recirculation	

# Series 2152

## Submersible Solids-Handling Pump

Type **SEOW-A power and control cable** resists rough handling and abrasion; U.L. Listed and rated for 105° C

**Easy-Lift® guide rail system** provides safe and efficient pump installation and removal

Heavy-duty radial and thrust bearings

Integral cast iron finned housing for maximum heat dissipation and strength

Stainless steel fasteners provided throughout assembly

Registered machine fits and positive sealing **O-ring seals** at all joints; easy replacement.

**Tandem (dual) Shaft Seal System** recessed out of the flow path

**Rigid lifting handle**

**F.M. Listed for application in Class 1, Groups C & D hazardous locations** (optional)

**MODU-CAB®\*** modular cable and rail-mounted terminal block system; epoxy sealed and grommeted with strain relief design; provides quick and easy connection; simple field repair or replacement

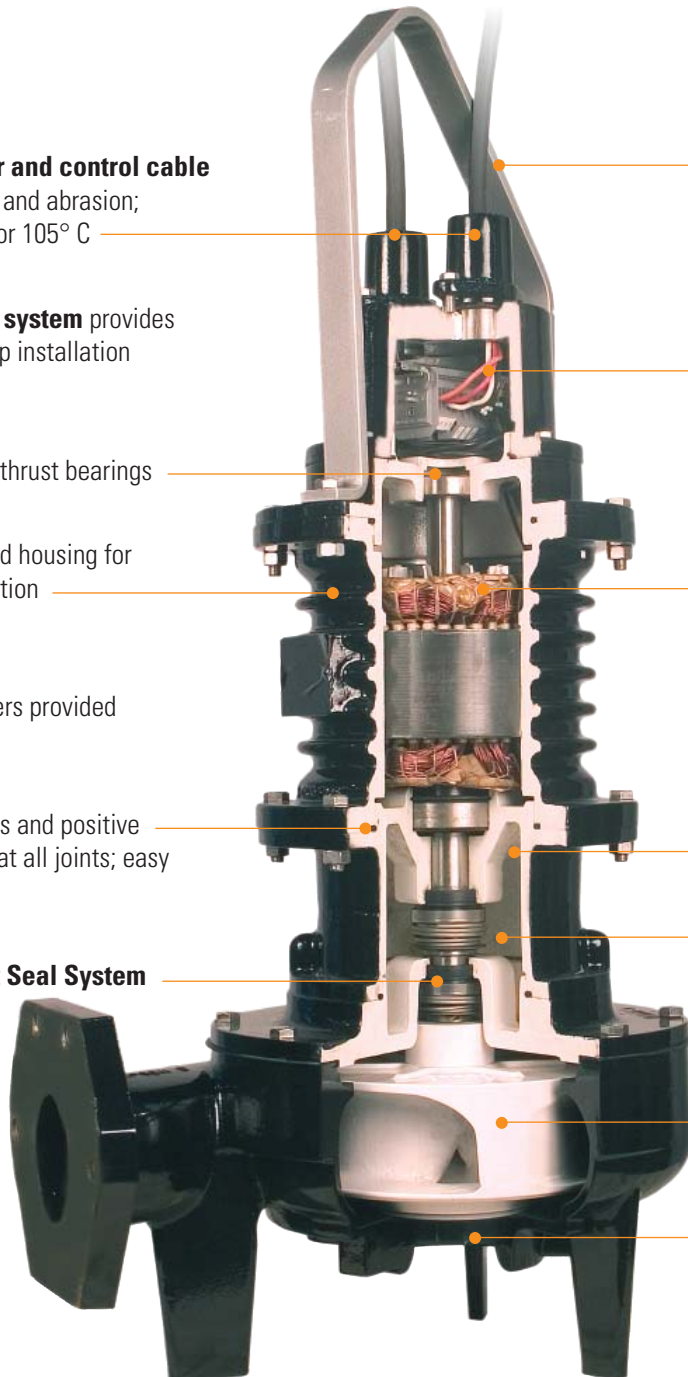
Thermal overload protection standard

**Two-wire / two-probe moisture detection** system insures a positive current path to and from probes; eliminates false alarms(not pictured here)

**Sealed oil chamber;** does not require constant monitoring of oil level

**Solids-Handling impeller** with large flow paths, designed for high efficiencies, trimmed and balanced to meet your specific hydraulic conditions

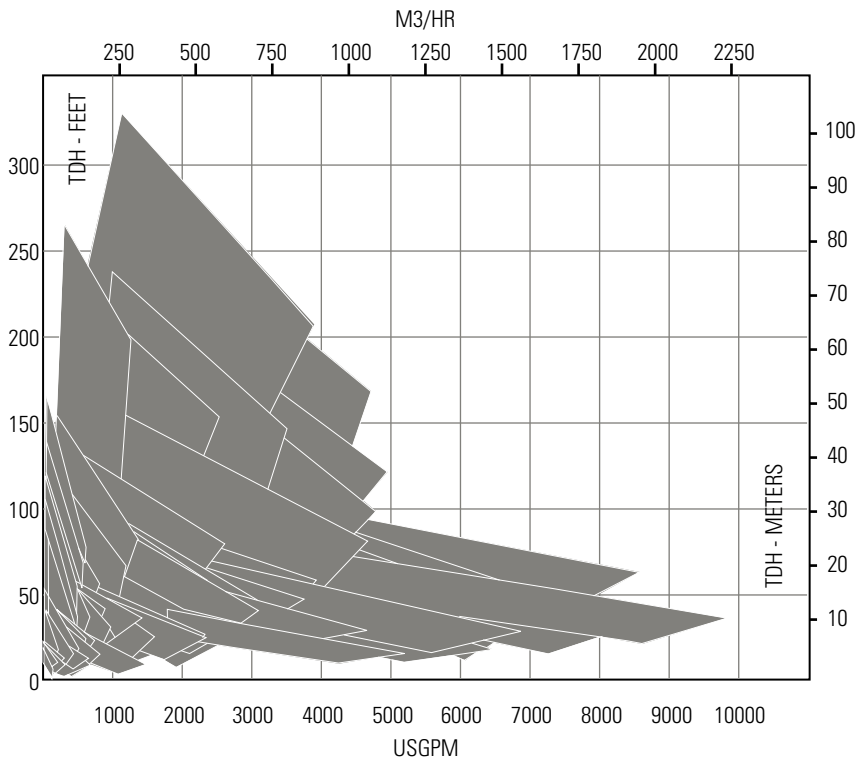
Abrasion resistant radial wear ring is **standard on Model CP6123** and smaller; hardened wear rings optional on all models.



\*US Patent No. 7,071,588; motor frames 180 and larger

# Series 2152

## Submersible Solids-Handling Pump

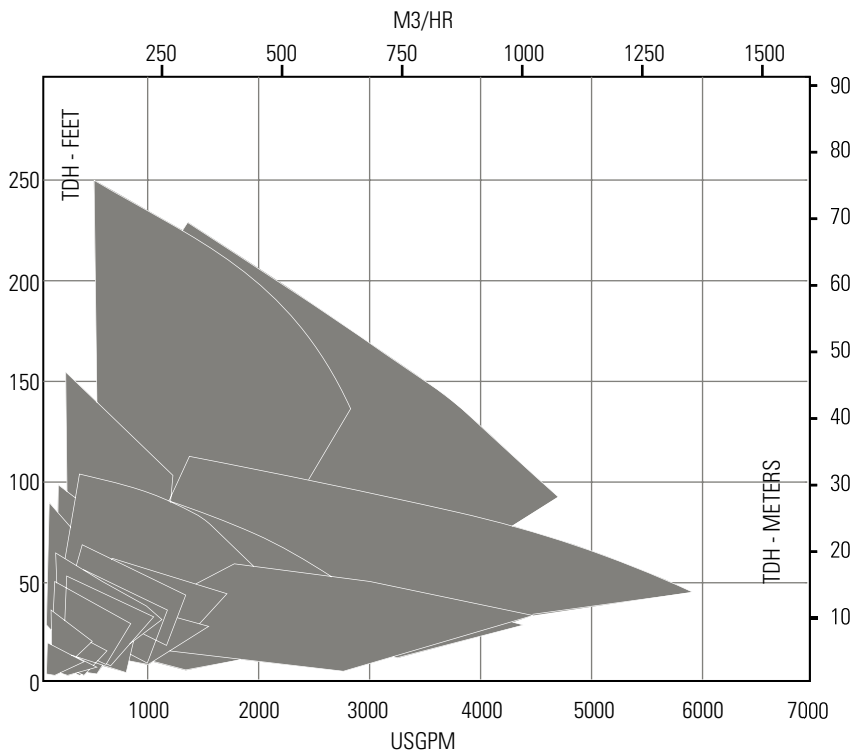


Series 2152 submersible solids handling wastewater pumps are among the finest available in today's wastewater industry. Heavy-duty industrial quality, superior design features and a wide range of materials and options combine to provide the user with the ultimate in long service life and system reliability.



# Series 2235

## Dry-Pit Submersible Solids-Handling Pump



### The patented closed-loop cooled (CLC) dry-pit submersible motor

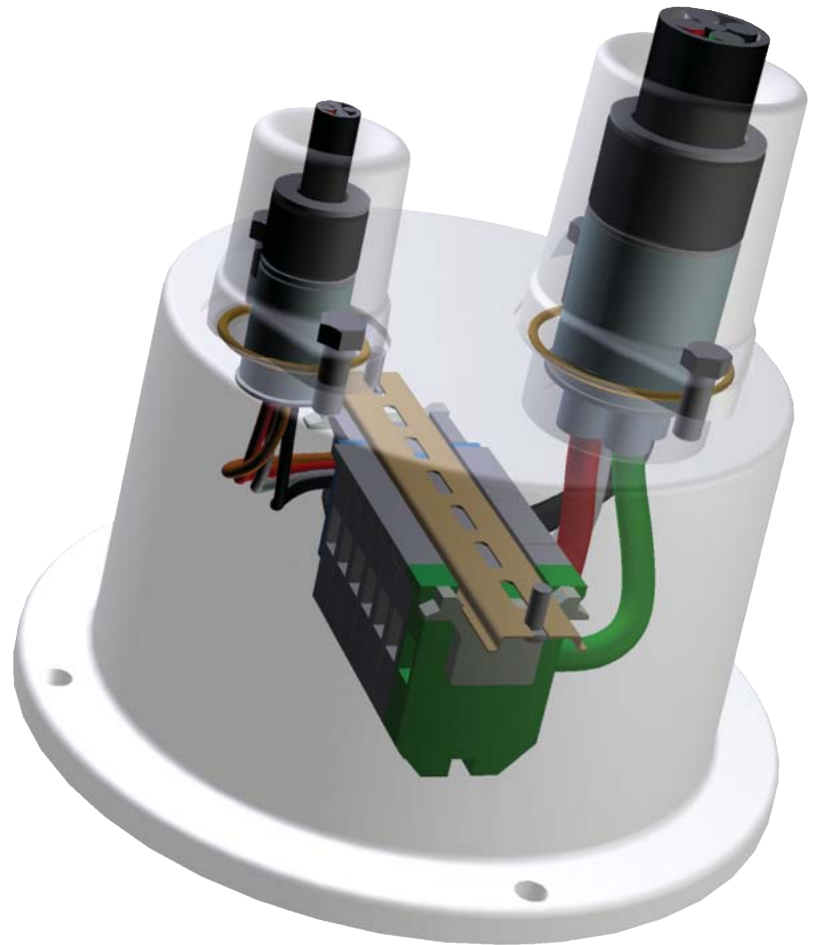
- Incorporates the same construction features as the Series 2152 for bearing design, shaft strength, mechanical seal system; utilizes the patented MODU-CAB® modular cap & cable system
- Heavy cast iron stator housing with integral cooling channels
- Eliminates the need for external connection of cooling fluids
- Unlike "sewage cooled" designs, does not use by-pass circulation of the pumped liquid for motor cooling
- Eliminates clogging of the cooling system due to grease or solids build-up; eliminates maintenance and downtime for periodic cleaning
- Eliminates motor overheating and premature insulation failure
- Eliminates bolt-on cooling jackets; no external seals to corrode, wear or leak



# Modu-Cab<sup>®</sup>

## Chicago Pump Patented Cap and Cable System

- Approved for explosion-proof service
- Modular design makes maintenance easy and low cost
- Single grommet on the cable entry assures that the cap is leakage free
- Epoxy sealed cable connectors prevent wicking into the motor if the cable sheath is ever cut
- Modular terminal block makes cable lead connecting quick and easy
- Easily repaired on site using commercially available components or various OEM kit configurations to match your particular repair
- Built in strain relief



US Pat. No, 7,071,588

# Supplemental Systems & Support

## ACCESSORIES

**Easy-Lift**® system provides safe, quick and effective pump installations and removal

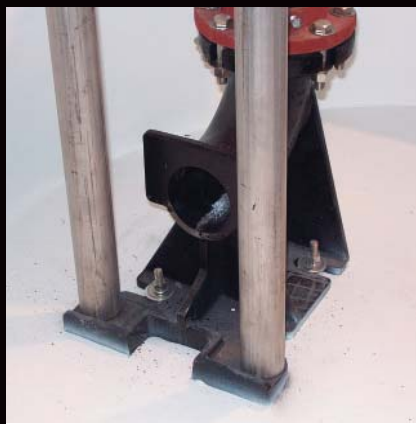
## CONTROLS

Chicago Pump supplies a wide range of controls and equipment to provide you with system integrity and "single-source" responsibility

## SERVICES

Our network of factory and local authorized service engineers and technicians is committed to optimizing pumping system performance and reliability. Available services include:

- Installation supervision, start-up, commissioning and operator training
- Diagnostics and troubleshooting
- Routine maintenance and repair
- Preventive maintenance and scheduled inspection programs
- Spare parts inventory and management programs
- System conversions, upgrades and retrofits





#### OTHER FINE CHICAGO PUMP PRODUCTS

---

The rugged design and superior features of our products provide long, reliable service life under the most demanding operating conditions. These qualities are found in our complete lineup of products including; The Original Chicago Pump Communitors, Dry-Pit Solids Handling Wastewater Pumps, Suspended Wet Pit Pumps and more!



---

Chicago Pump  
3905 Enterprise Court  
Aurora, IL 60504  
630-236-5700  
www.chicagopump.com



ISO 9001:2000 Quality System

Bulletin 2152/2235-08 07