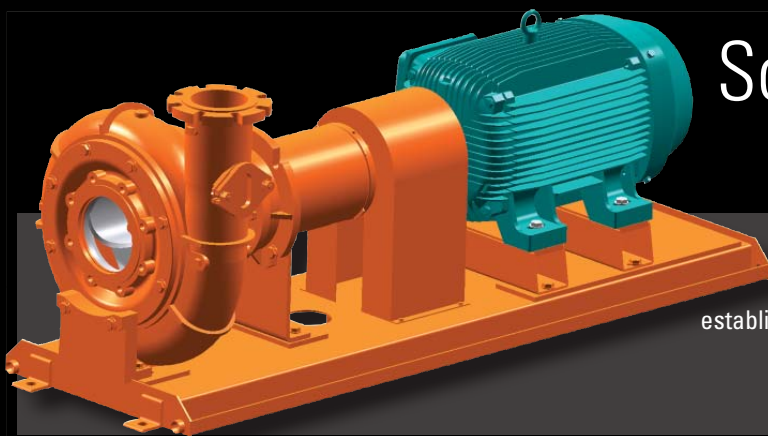


Dry Pit Solids Handling Pumps



A Time-Tested Leader

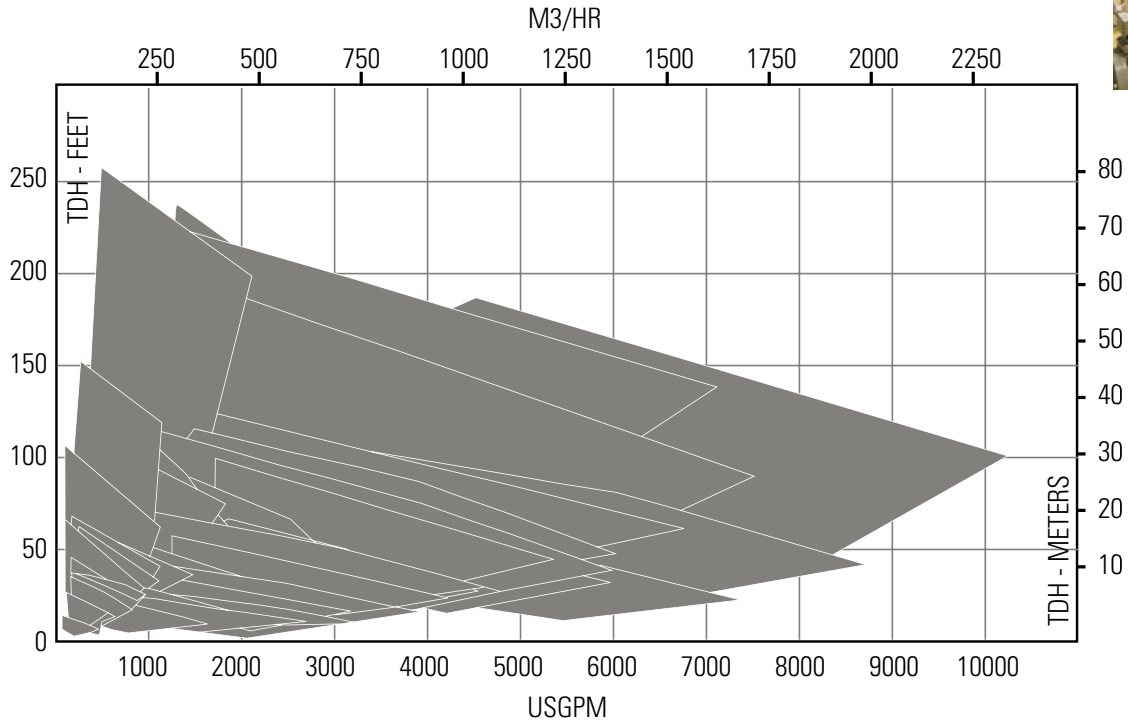
Chicago Pump Dry Pit Solids Handling Pumps have an established reputation of efficiency, long life and reliable operation

First in: Quality Reliability Innovation

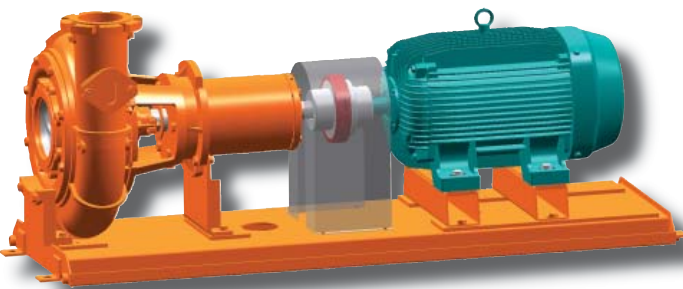


Series 2111

Dry Pit Solids-Handling Pumps



- Capacities to 10,000 GPM (2,271 m³/h)
- Heads to 240 ft. (73m)
- Temperatures to 150° F (66° C)
- Pressures to 150 PSI (1,034 kPa)
- Discharge sizes from 4" (102mm) to 12" (305mm)
- Solids (sphere size) from 3" (64mm) to 5" (127mm)



HBB
Horizontal Base Mounted



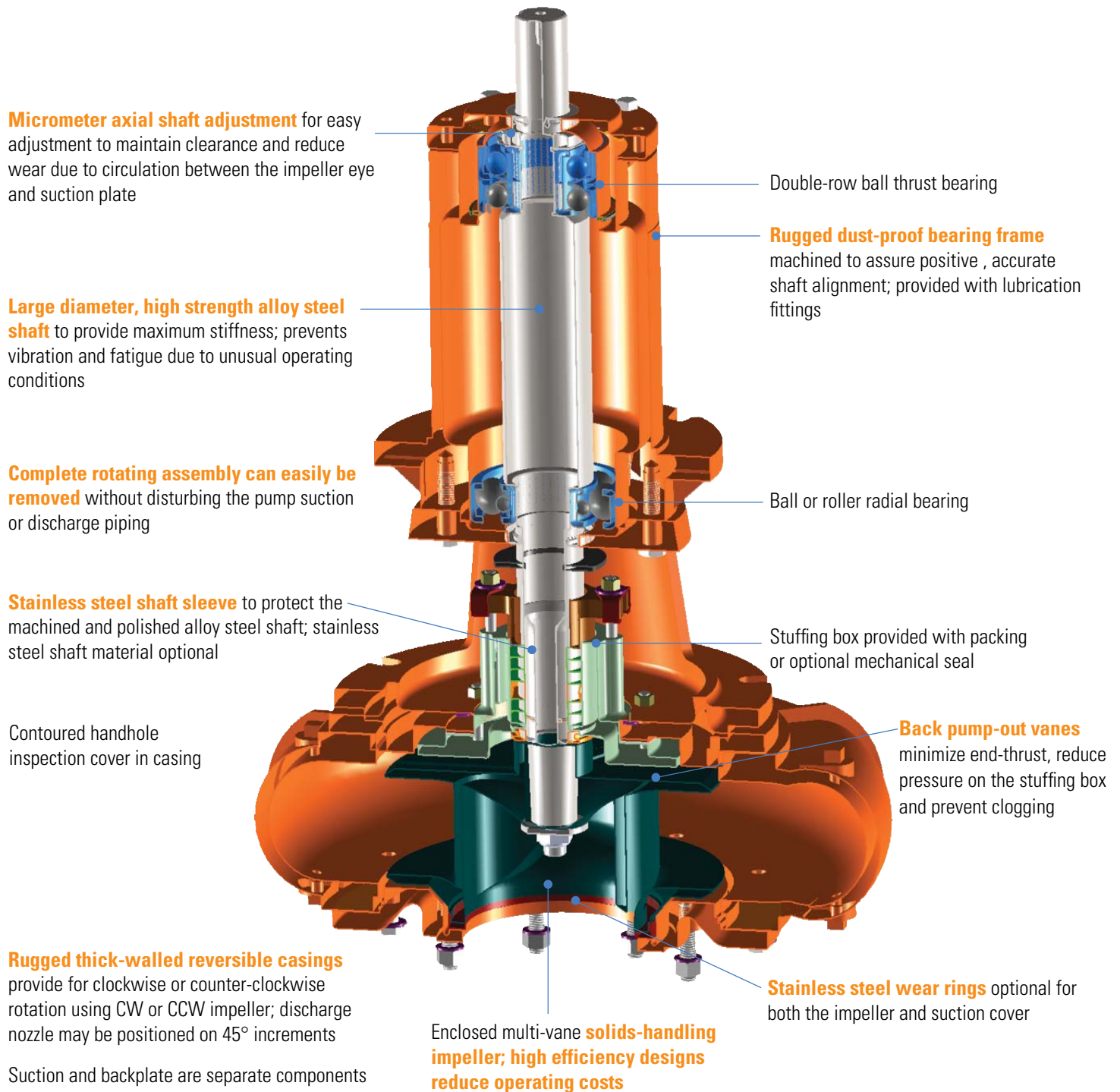
VPM
Vertical Pedestal Mounted



VOS
Vertical Open Shaft

Standard Features

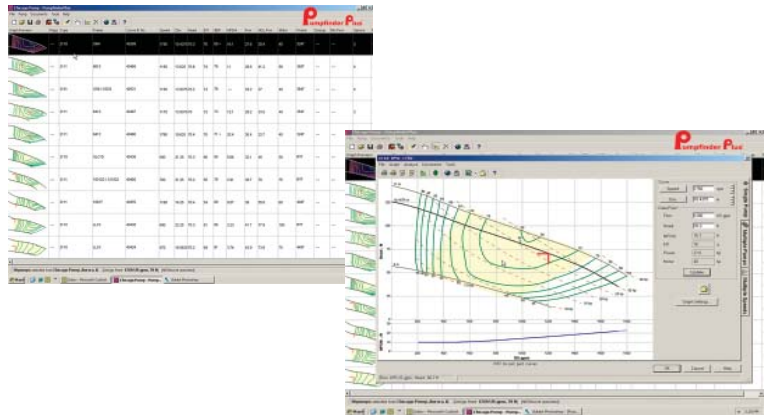
Engineered for long service life and low maintenance



Features may vary depending upon series, model and bearing frame



Chicago Pump provides the latest in free, user-friendly pump selection and sizing software for all of our pump types and configurations; with easy online web access and supporting documents, including specifications, installation drawings, product information and sales brochures. The program facilitates easy submission of quotation and engineering support requests to our staff of experienced application engineers.



Chicago Pump
3905 Enterprise Court
Aurora, IL 60504
630-236-5700
www.chicagopump.com



ISO 9001:2000 Quality System

Bulletin CP 2111-04-09