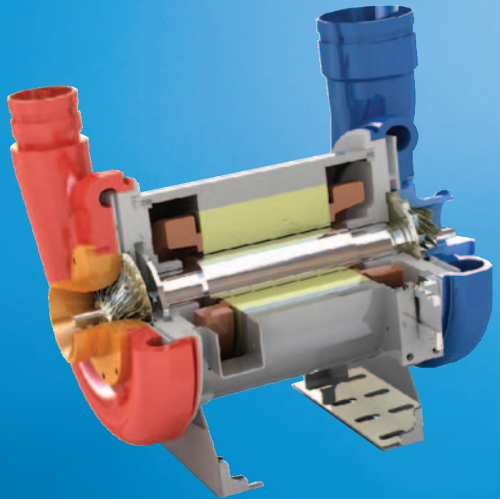


Beyond
Improvement



High Efficiency
Quiet & Small
Semi-Permanent Life
Environment Friendly

TB Series

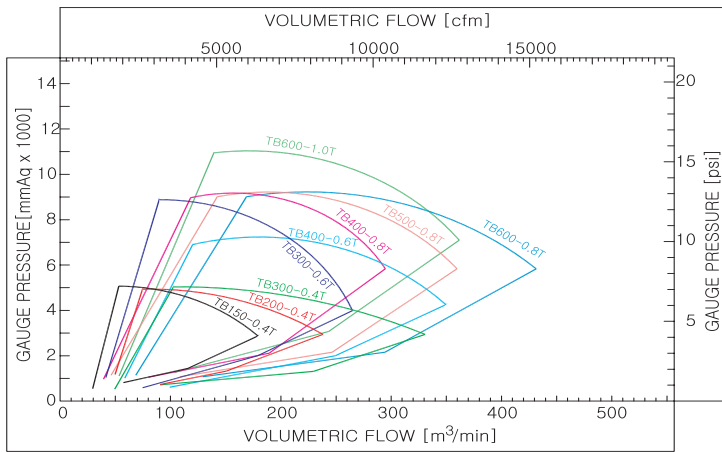
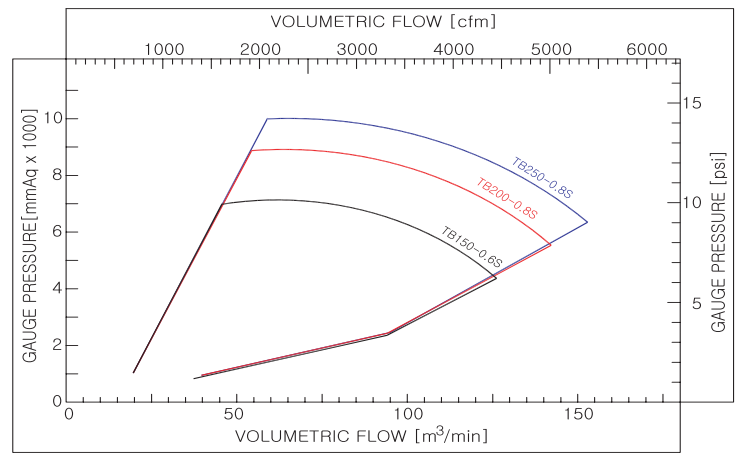
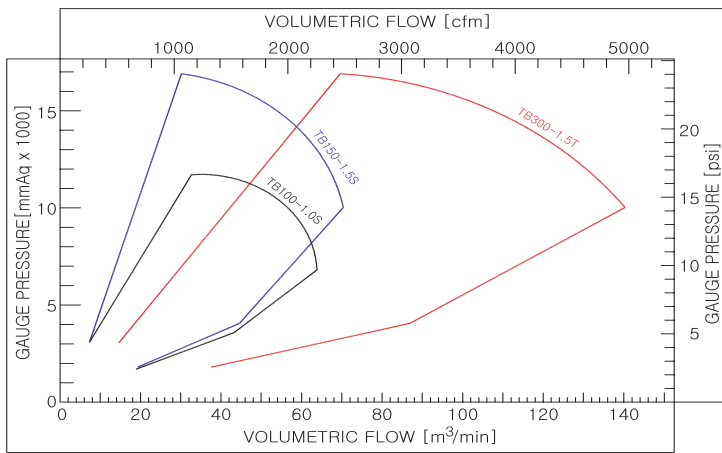
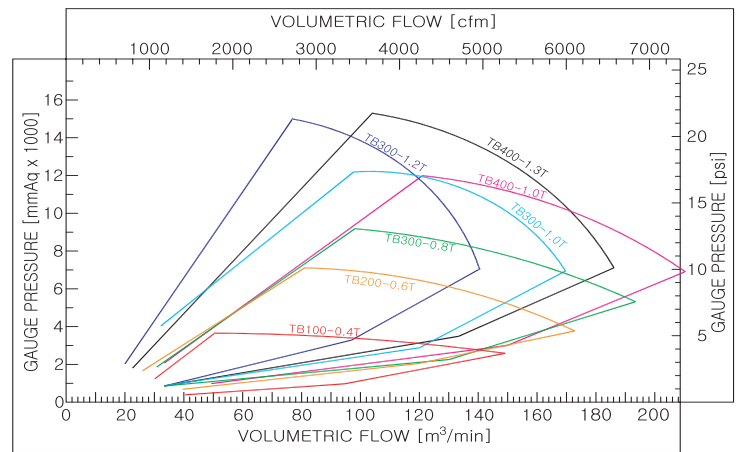
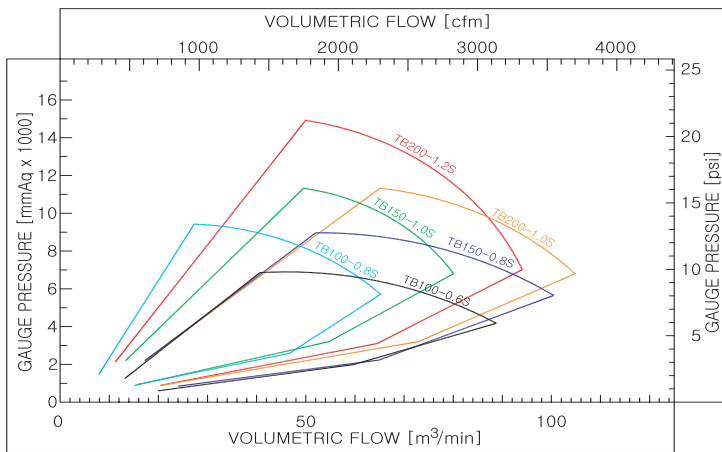
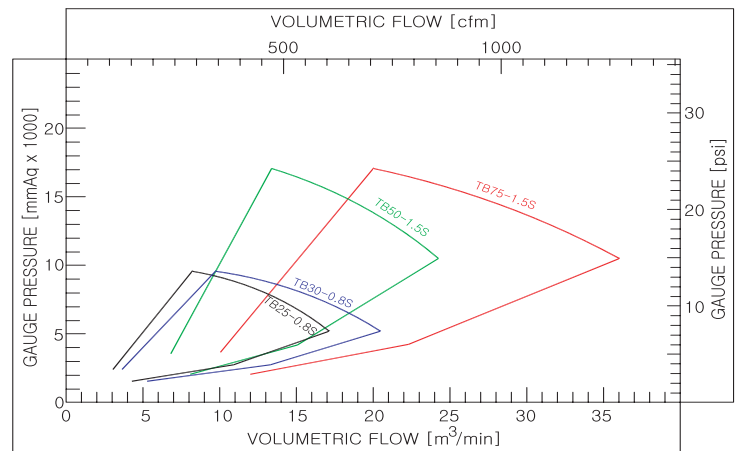
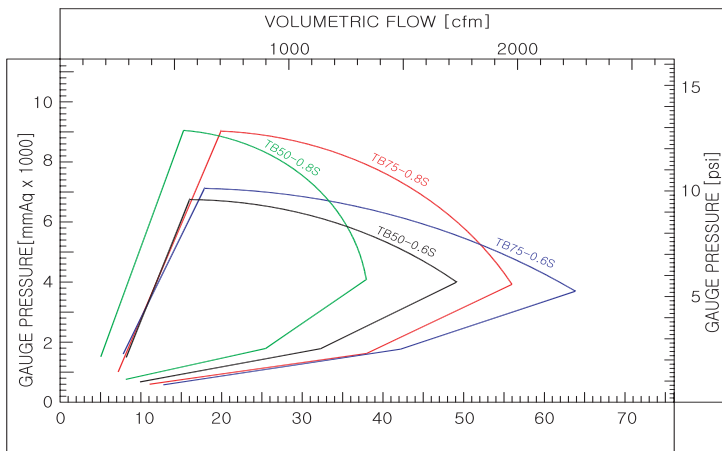
4th Generation TB Series

- ❖ Permanent magnet motor
- ❖ High strength stainless steel impeller
- ❖ Real high rise-to-surge
- ❖ Variable geometry diffuser (option)
- ❖ Variable cooling effort
- ❖ Real flow meter installed
- ❖ No oil
- ❖ No water cooling system
- ❖ No waste heat radiation
- ❖ No suction air heating

Performance Curve

25~600HP

※ Ambient Condition : 1atm, 20°C, 65%RH, density = 1.2kg/m³

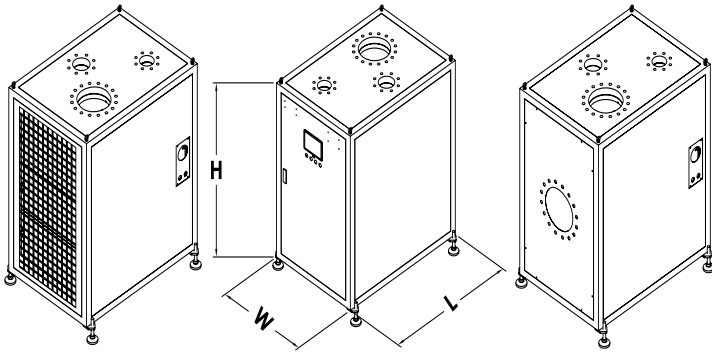


TB Series

◆ US / SI Unit

[Specification & Dimension]

※ Turbo Blower 25HP~600HP



Bottom (Standard Type)

Front

Bottom (Pipe Type)

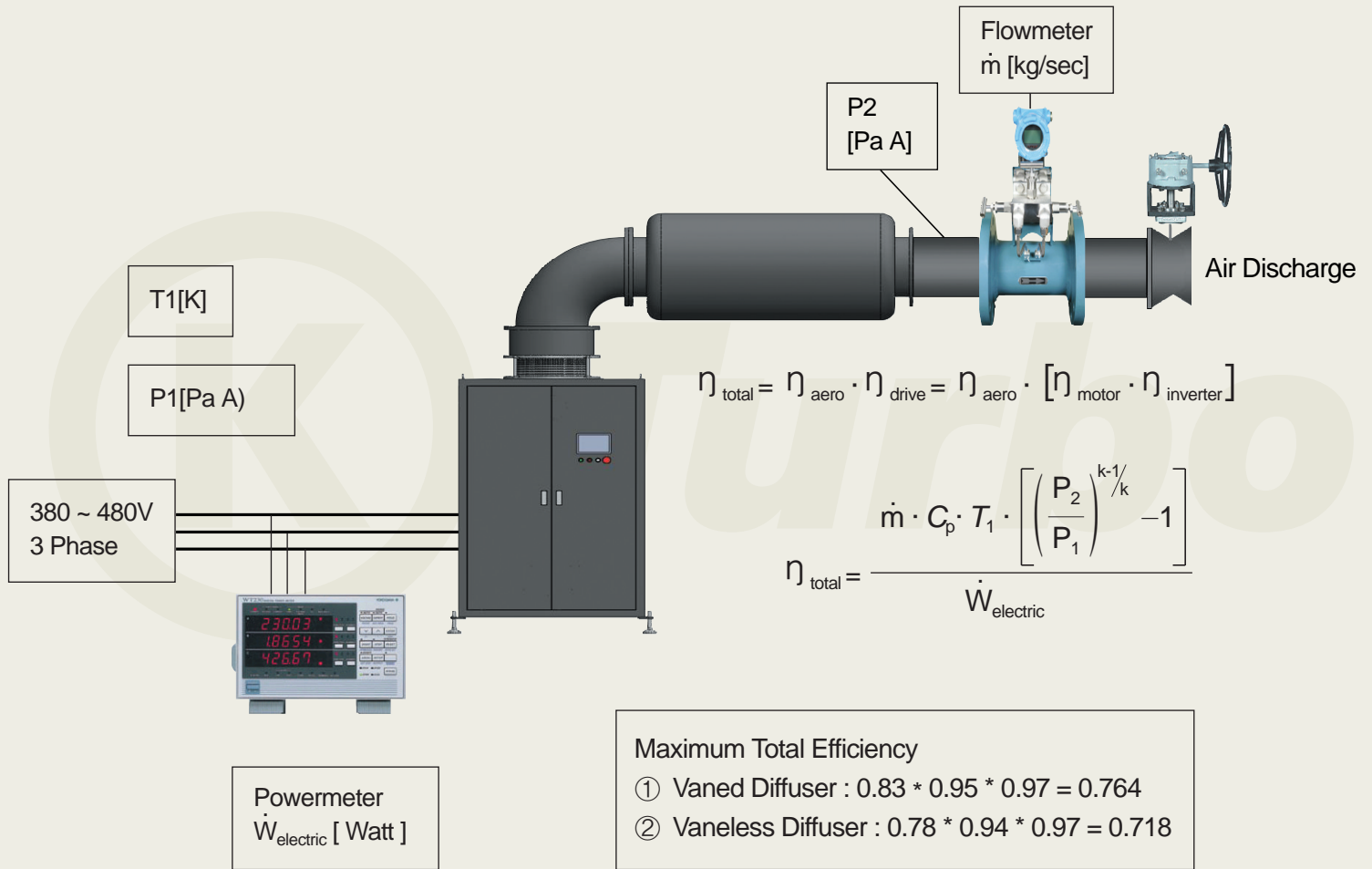
※ Electric Specification

MODEL	Breaker capacity	Rated current (A)				Main. wire	Main. GND
		380V	440V	480V	575V	mm ²	mm ²
25HP	60A	39	34	31	26	22	16
50HP	125A	78	67	62	52	35	25
75HP	175A	117	101	93	78	50	25
100HP	225A	155	134	123	103	70	35
150HP	350A	233	201	185	154	150	95
200HP	400A	310	268	246	205	185	95
300HP	600A	465	402	368	307	400	240
400HP	800A	622	537	493	411	500	300
500HP	1000A	778	672	617	514	600	400
600HP	1200A	932	805	738	616	800	600

TYPE	MODEL	PRESSURE [psi/mmAq]	AIR FLOW [cfm/m ³ /min]	SUCTION FLANGE	MAIN DISCHARGE FLANGE	COOLING AIR FLANGE	PACKAGE DIMENSION [inch/mm]			WEIGHT [lbs/kg]
							W	L	H	
SINGLE	TB25-0.8S	11.4/8000	459/13.4	8"/200A	6"/150A	4"/100A	26/650	41/1050	43/1100	661/300
	TB30-0.8S	11.4/8000	565/16.1	8"/200A	6"/150A	4"/100A	26/650	41/1050	43/1100	661/300
	TB50-0.6S	8.5/6000	1236/35	8"/200A	6"/150A	4"/100A	26/650	41/1050	43/1100	992/450
	TB50-0.8S	11.4/8000	953/26	8"/200A	6"/150A	4"/100A	26/650	41/1050	43/1100	992/450
	TB50-1.5S	21.3/15000	600/17.3	8"/200A	6"/150A	4"/100A	26/650	41/1050	43/1100	992/450
	TB75-0.6S	8.5/6000	1801/50	10"/250A	8"/200A	4"/100A	32/800	46/1180	55/1400	1235/560
	TB75-0.8S	11.4/8000	1430/40.5	10"/250A	8"/200A	4"/100A	32/800	46/1180	55/1400	1235/560
	TB75-1.5S	21.3/15000	918/26	8"/200A	6"/150A	4"/100A	32/800	46/1180	55/1400	1235/560
	TB100-0.6S	8.5/6000	2472/70	12"/300A	10"/250A	4"/100A	32/800	46/1180	55/1400	1345/610
	TB100-0.8S	11.4/8000	1907/54	10"/250A	8"/200A	4"/100A	32/800	46/1180	55/1400	1235/560
	TB100-1.0S	14.2/10000	1589/47	10"/250A	8"/200A	4"/100A	32/800	46/1180	55/1400	1345/610
	TB150-0.6S	8.5/6000	3708/105	16"/400A	12"/300A	6"/150A	39/980	55/1395	63/1598	2205/1000
	TB150-0.8S	11.4/8000	2825/80	12"/300A	10"/250A	6"/150A	39/980	55/1395	63/1598	1830/830
	TB150-1.0S	14.2/10000	2436/69	12"/300A	10"/250A	6"/150A	39/980	55/1395	63/1598	1874/850
	TB150-1.5S	21.3/15000	1801/51	10"/250A	8"/200A	6"/150A	39/980	55/1395	63/1598	1874/850
	TB200-0.8S	11.4/8000	3814/108	16"/400A	12"/300A	6"/150A	39/980	55/1395	63/1598	2094/950
	TB200-1.0S	14.2/10000	3143/89	12"/300A	10"/250A	6"/150A	39/980	55/1395	63/1598	1874/850
	TB200-1.2S	17.1/12000	2755/78	12"/300A	10"/250A	6"/150A	39/980	55/1395	63/1598	1874/850
TB250-0.8S	11.4/8000	4767/135	16"/400A	12"/300A	6"/150A	39/980	55/1395	63/1598	2866/1300	
TB100-0.4T	5.7/4000	3355/99	20"/500A	16"/400A	4"/100A	32/800	46/1180	55/1400	1874/850	
TWIN	TB100-2.0T	28.5/20000	953/27	6"/150A	5"/125A	4"/100A	32/800	46/1180	55/1400	1345/610
	TB150-0.4T	5.7/4000	5297/150	20"/500A	16"/400A	6"/150A	39/980	55/1395	63/1598	2205/1000
	TB200-0.4T	5.7/4000	7063/200	24"/600	20"/500A	6"/150A	39/980	55/1395	63/1598	2205/1000
	TB200-0.6T	8.5/6000	4944/140	20"/500A	16"/400A	6"/150A	39/980	55/1395	63/1598	2205/1000
	TB200-2.0T	28.5/20000	1942/55	8"/200A	7"/175A	6"/150A	39/980	55/1395	63/1598	1874/850
	TB250-1.5T	21.3/15000	2966/84	16"/400A	12"/300A	6"/150A	39/980	55/1395	63/1598	2755/1250
	TB300-0.4T	5.7/4000	10241/290	28"/700A	24"/600A	6"/150A	51/1300	63/1600	80/2035	2866/1300
	TB300-0.6T	8.5/6000	7169/210	24"/600A	20"/500A	6"/150A	51/1300	63/1600	80/2035	2866/1300
	TB300-0.8T	11.4/8000	5686/161	20"/500A	16"/400A	6"/150A	51/1300	63/1600	80/2035	2866/1300
	TB300-1.0T	14.2/10000	4873/138	20"/500A	16"/400A	6"/150A	51/1300	63/1600	80/2035	2976/1350
	TB300-1.2T	17.1/12000	4132/117	20"/500A	16"/400A	6"/150A	51/1300	63/1600	80/2035	2976/1350
	TB300-1.5T	21.3/15000	3567/87	16"/400A	12"/300A	6"/150A	51/1300	63/1600	80/2035	2755/1250
	TB300-2.0T	28.5/20000	2931/83	10"/250A	8"/200A	6"/150A	51/1300	63/1600	80/2035	2866/1300
	TB400-0.6T	8.5/6000	9888/280	28"/700A	24"/600A	6"/150A	71/1800	83/2100	104/2650	5512/2500
	TB400-0.8T	11.4/8000	7770/220	24"/600A	20"/500A	6"/150A	51/1300	63/1600	80/2035	4630/2100
	TB400-1.0T	14.2/10000	6286/178	20"/500A	16"/400A	6"/150A	51/1300	63/1600	80/2035	3792/1720
	TB400-1.3T	18.5/13000	5298/150	20"/500A	16"/400A	6"/150A	51/1300	63/1600	80/2035	3792/1720
	TB500-0.8T	11.4/8000	9712/275	28"/700A	24"/600A	8"/200A	71/1800	83/2100	104/2650	5071/2300
TB600-0.8T	11.4/8000	11654/330	28"/700A	24"/600A	8"/200A	71/1800	83/2100	104/2650	5512/2500	

How to test your blower ?

[Efficiencies of blower]



KTURBO INC,

Main Headquarter(Factory and R&D Center)
 631, Bugang Buyong Cheongwon Chungbuk,363-941, KOREA
 Tel. +82-43-275-7573 Fax. +82-43-275-7581

Homepage : www.kturbo.com
 E-mail : info@kturbo.com

KTURBO USA INC,

USA office & Factory
 1183 Pierson Dr, Unit 118, Batavia, IL 60510 USA
 TEL. +1-630-406-1473 FAX. +1-630-406-1538
 Email: trinity@kturbo.com

KTURBO EUROPE GmbH

Europe office
 Kurfuersten Platz 34, 60486 Frankfurt am Main, GERMANY
 TEL. +49-69-716-75855 FAX. +49-69-778918
 Email: paulus@kturbo.com